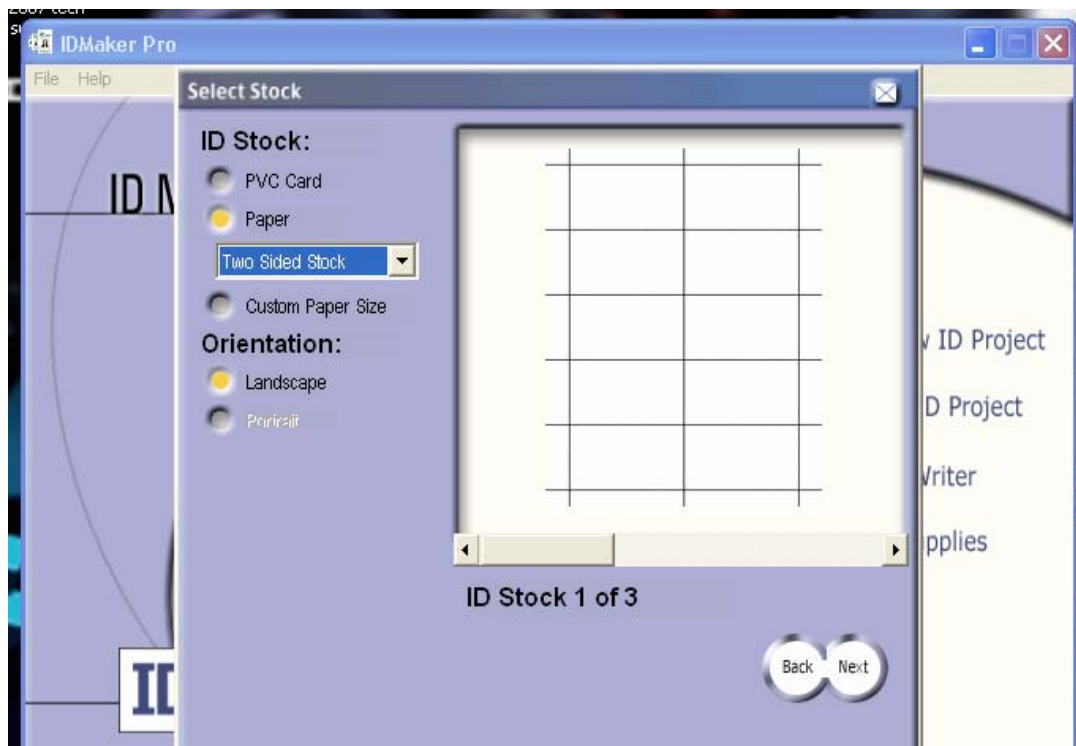


How do I select the correct 2 sided paper stock?



To select the correct paper stock for a two sided ID project, you have three choices to choose from. In the paper selection drop down, choose Two Sided Stock. Move the slider under the image of the paper stock to make your selection.

ID Stock 1 of 3 is for Business Card ([ITEM #45176](#))

ID Stock 2 of 3 is for Credit Card ([ITEM #45177](#))

ID Stock 3 of 3 is for Name Badge ([ITEM #45178](#))

**NOTE:** When printing, verify that the correct paper stock has been loaded. IDMaker will prompt you for the correct paper stock for your ID project. If an incorrect paper stock is selected, the margins for printing will be off. There is no way to change the stock selection once you have started your ID layout.

ID Maker includes a full help file in the software (Help > Help with ID Maker), a quick start guide in the jewel case, and further information available on our website here: <http://www.IDville.com/Support>